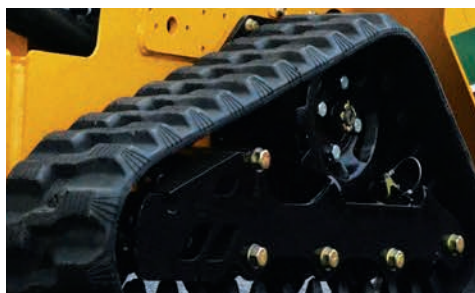


SC30TX STUMP CUTTER



LONGEST TRACKS IN CLASS.

Provides consistent stability and easier loading and unloading of the machine when compared to shorter tracked models. The longer tracks offer best in class low ground bearing pressure, which help reduce the possibility of turf damage.



SMOOTH OPERATION.

The exclusive SmartSweep™ control system monitors engine load and provides continuous feedback resulting in a smooth and consistent cutter wheel sweep rate.



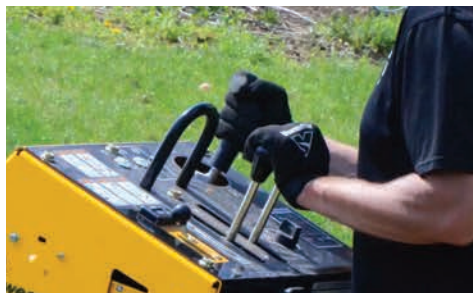
PATENTED YELLOW JACKET™ CUTTER SYSTEM.

The Vermeer-exclusive Yellow Jacket cutter system is designed to provide faster, easier serviceability, as well as extended pocket and tooth life.



25 HP (18.6 KW) EFI ENGINE.

Starts well during cold weather, makes choke cable obsolete and offers improved fuel economy over comparable carbureted gas engines.



OPERATOR PRESENCE SYSTEM.

Control handles for the boom swing, boom raise/lower are equipped with operator presence capacitance sensing handles. This system is intended to help protect the operator.



HYDRAULICALLY DRIVEN CUTTER WHEEL AND GROUND DRIVE.

The elimination of belts or chain drives reduces service and maintenance.



VERMEER.COM

Vermeer

EQUIPPED TO
DO MORE.™

SC30TX STUMP CUTTER

GENERAL

Length: 94" (238.7 cm)

Width: 35" (88.9 cm)

Height: 49" (124.4 cm)

Weight: 1550 lb (703.1 kg)

ENGINE

Make and model: Kohler ECH740 EFI

Number of cylinders: 2

Max gross horsepower: 25 hp (18.6 kW)

Max torque: 42 ft-lb (56.9 Nm)

Fuel tank capacity: 6.8 gal (25.7 L) Fuel

type: Gas

Air cleaner: 6" (15.2 cm) 2-stage dry

Oil filter: Spin-on

Oil volume with filter: 2 qt (1.8 L)

Cooling medium: Air/Oil

CUTTER WHEEL DRIVETRAIN

Cutter wheel diameter without teeth: 16" (40.6 cm)

Cutter wheel thickness: .5" (12.7 cm)

Cutter wheel straight line dimension: 35.5" (90.1 cm)

Cutter wheel cut above ground: 25" (63.5 cm)

Cutter wheel cut below ground: 12" (30.4 cm)

Tooth description: Yellow Jacket™ cutter system

Number of teeth: 16

Number of indexes: 2

Number of pockets: 16

Reversible pockets: Yes

Cutter wheel guard: Yes

Chip containment: 2.2 cu ft (.1 cu m)

HYDRAULIC SYSTEM

Tank capacity: 9 gal (34.1 L)

Recommended oil type: ISO 68

Filtration method: Inline return filter

Pump flow at max rpm: 16 gpm (60.6 L/min)

System relief pressure: 2750 psi (189.6 bar)

Flow control: SmartSweep

Directional control: Standard

Oil cooler: Fan-cooled

ELECTRICAL SYSTEM

System voltage: 12 V

Battery: 405

Standard gauge: Hour meter/tach

Switches: Cutter wheel drive

Controller: Yes

TRACK DRIVE SYSTEM

Track type: Rubber 7" (17.8 cm) width

Track length on ground: 31.4" (79.7 cm)

Type of idler: Cast

Number of idlers: 5

Track drive pump type: Hydrostatic

System relief pressure: 2900 psi (199.9 bar)

Pump flow at max rpm: 11.4 gpm (43.1 L/min)

High speed travel: 3.2 mph (5.1 km/h)

Ground-bearing pressure - soft ground: 3.4 psi (23.4 kPa)

NOTES:

Vermeer Corporation reserves the right to make changes in engineering, design and specifications; add improvements; or discontinue manufacturing at any time without notice or obligation. Equipment shown is for illustrative purposes only and may display optional accessories or components. Please contact your local Vermeer dealer for more information on machine specifications. Vermeer, the Vermeer logo, Equipped to Do More, AutoSweep and Yellow Jacket are trademarks of Vermeer Manufacturing Company in the U.S. and/or other countries. © 2015 Vermeer Corporation. All Rights Reserved. Printed in the U.S.A. Please recycle.

